



**SAFENESS QUOTIENT LIMITED**

1



5

2



6

3



7

4



8

I  
N  
D  
E  
X

# ABOUT US

Traffic safety and industrial signage business was a part of operations of our flagship, SOLE-SAFE group, a well-established major player for over two decades in various verticals of industrial safety products and solutions. With a view to harness rapid growth opportunities arising out of Indian government's recent infrastructure focus, we at, SOLE-SAFE group, felt the need for spinning traffic safety and industrial signage business into an independent vehicle and that is how SQL came into being since 2014.

At SQL, our core team's genetic code is proven hard-core engineering & technology skills coupled with clinical project management prowess leading us to conceive, design, develop, plan, construct and timely deliver traffic safety and industrial signage solutions suited for specialized customer and project-specific needs, of course with observance of budgetary constraints. We bring to the table a major value-addition in terms of adopting globally accepted practices in the field of traffic safety and industrial signage's through our inherited and fresh global tie-ups providing us the much necessary long-term product support in our pursuit of customized and innovative systems integration.

Because of our legacy strengths through other group companies, we also provide integration with other safety products and solutions of verticals in various industrial safety fields relevant on a case-to-case basis.

## Looking Ahead :

We see ourselves morphing into an EPC player of reckoning in our chosen field of traffic safety and industrial signage solutions space while striving to become instrumental in substantially reducing human casualties.

## On our Dashboard :

Capture emerging markets' infrastructure growth opportunities to provide value maximization for all our stakeholders along our route to conquer first milestone of becoming a billion rupee company by 2025

## Our Value Spectrum :

1. Full bouquet of products and solutions with relevant quality recognitions, user-friendliness and aesthetic aspects.
2. Customer-centric and reliable delivery mechanism.
3. Technological competence with innovative thinking.
4. Value creation for all stakeholders.
5. Highest business ethics and corporate governance standards.
6. Discretion in CSR sphere.
7. Eco-responsibility.



# OUR TEAM

**Pinank Vora** : spearheads the Traffic Safety & Industrial Signage business vertical of the company, as Chief Operating Officer & Whole-time Director on the Board of the company. Project Design, Development, Estimation, Planning & Execution are among his major areas of contribution. Some of the other areas of his contribution include Material Sourcing & Procurement, Materials Management and Sales & Marketing.

**Dhwanee Kamdar** : leads Sales & Digital Marketing function in the company, as Sales & Marketing Director on the Board of the company. Apart from her Sales & Digital Marketing forte, she also contributes to Strategic Corporate Planning, Human Resource Development, Systems and Technology Absorption initiatives of the company.

She has an impressive track-record in successfully carrying out various assignments in all her areas of contributions.

**Archana Shah** : leads HR and Admin function in the company, as HR & Admin Director on the Board of the company. Additionally, she also actively contributes to Banking, Financial Accounting & Audit, Company Secretarial, Liaison and Legal & Professional co-ordination work in the company, also leads CSR initiative of the company.

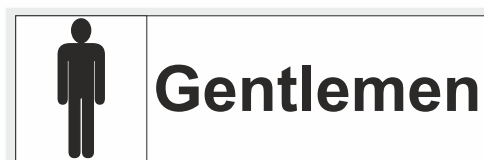
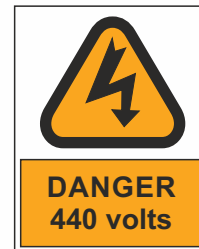
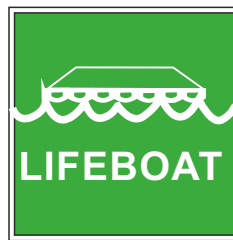
**Bhupesh Kamdar**: He has over 25 years of vast and varied successful track-record of entrepreneurship leads the Board of the company as Chairman & Managing Director. He provides his valuable inputs and able guidance in the areas of fresh customer acquisition drive of the company through Direct Approach Marketing and Digital Marketing, major Customer Relationship Management, Public Relations, Global Principles Relationship Management, Vendor Development, Product / Solutions Development & Delivery and Business Strategy Formulation.

**Mahendra Kamdar** : He has over 25 years of experience serves as Finance & Technology Director on the Board of the company. Major areas of his contribution include Business Process Re-engineering, Systems Design, Development & Implementation, Information Technology, Automation, Finance & Banking and Corporate Strategy. Other areas of his contribution include Human Resource Development, management of global tie-ups, Employee Engagement, HR Performance Management and Digital Marketing & Content Management

# SIGNAGE'S



We offer a wide range of products which include Safety Signs such as Mandatory Safety Signs, Prohibition Safety Signs, Warning Safety Signs, Informatory Safety Signs, Electrical Safety Signs, Chemical Safety Signs and many more items.



# Traffic And Road Safety



## SPEED BREAKER



SQL-TRS-SB-SR-001

## SPEED BREAKER



SQL-TRS-SB-RSB-003

## SPEED RETARDERS



SQL-TRS-SB-SR-004

## CORNER GUARD



SQL-TRS-CG-CG-001

## RUBBER CORNER PROTECTOR



SQL-TRS-CG-RCP-006

## U - SHAPE CORNER GUARD



SQL-TRS-CG-PCG-007



# Traffic And Road Safety

**CONVEX MIRROR**

**POLYCARBONATE CONVEX MIRROR**

**CONVEX OUTDOOR MIRROR**



SQL-TRS-CM-CM-001



SQL-TRS-CM-PCM-002



SQL-TRS-SB-RSB-003

**CAR STOPPER**

**WHEEL STOPPER**

**PYRAMID WHEEL CHOCKS**



SQL-TRS-CS-CS-001



SQL-TRS-CS-WS-002

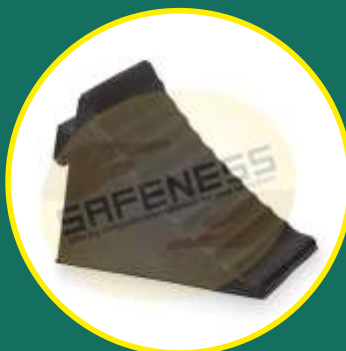


SQL-TRS-WCh-PWCh-001

**L-SHAPE WHEEL CHOCK**

**C-SHAPE WHEEL CHOCK**

**TRIANGULAR WHEEL CHOCK**



SQL-TRS-WCh-WCh-002



SQL-TRS-WCh-CWCh-003



SQL-TRS-WCh-TWCh-004

# Traffic And Road Safety



**LARGE AIRCRAFT  
WHEEL CHOCK**



SQL-TRS-WCh-LAWCh-005

**MEDIUM AIRCRAFT  
WHEEL CHOCK**



SQL-TRS-WCh-MAWCh-006

**JET WHEEL CHOCKS**



SQL-TRS-WCh-JWCh-007

**HEAVY DUTY WHEEL CHOCK**



SQL-TRS-WCh-HDWCh-008

**CURVED WHEEL CHOCK**



SQL-TRS-WCh-CWCh-009

**TRAFFIC CONES**



SQL-TRS-TC-TC-001

**ROAD SAFETY CONE**



SQL-TRS-TC-RSC-002



# Traffic And Road Safety



**ROAD STUD**



SQL-TRS-RS-RS-001

**3M ROAD STUDS**



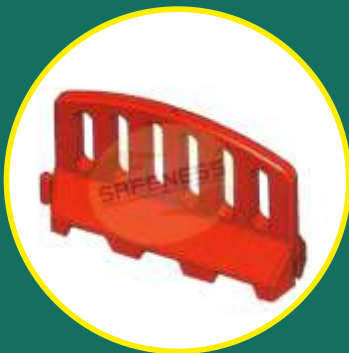
SQL-TRS-RS-3MRS-002

**SOLAR ROAD STUD**



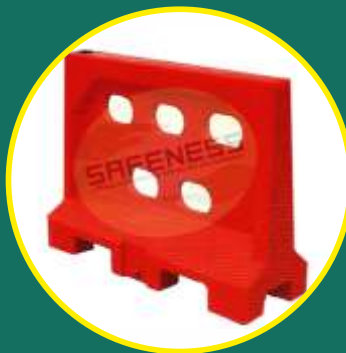
SQL-TRS-RS-SRS-003

**FENCE BARRICADES**



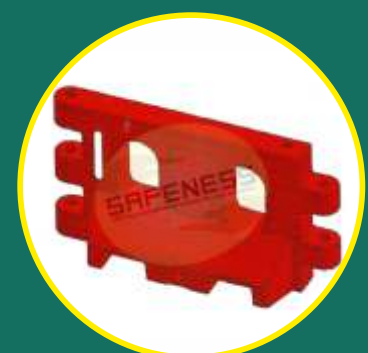
SQL-TRS-B-FB-001

**CHECKPOST BARRICADES**



SQL-TRS-B-CB-002

**WATER FILLABLE BARRIERS**



SQL-TRS-B-WFB-003

**METRO WATER FILLABLE BARRIERS**



SQL-TRS-B-MWFB-004

**COMBO WALL BARRIERS**



SQL-TRS-B-CWB-005

**WHEEL CLAMPS**



SQL-TRS-WC-WC-001

# Security Products



**HAND HELD METAL DETECTOR**

**HAND HELD METAL DETECTOR**

**SINGLE ZONE DOOR FRAME METAL DETECTOR**



SQL-SP-MD-HHMD-001



SQL-SP-MD-HHMD-002



SQL-SP-MD-SZDFMD-003

**MULTI ZONE DOOR FRAME METAL DETECTOR**

**MEGA PHONE**

**UNDER VEHICLE SEARCH MIRROR**



SQL-SP-MD-MZDFMD-004

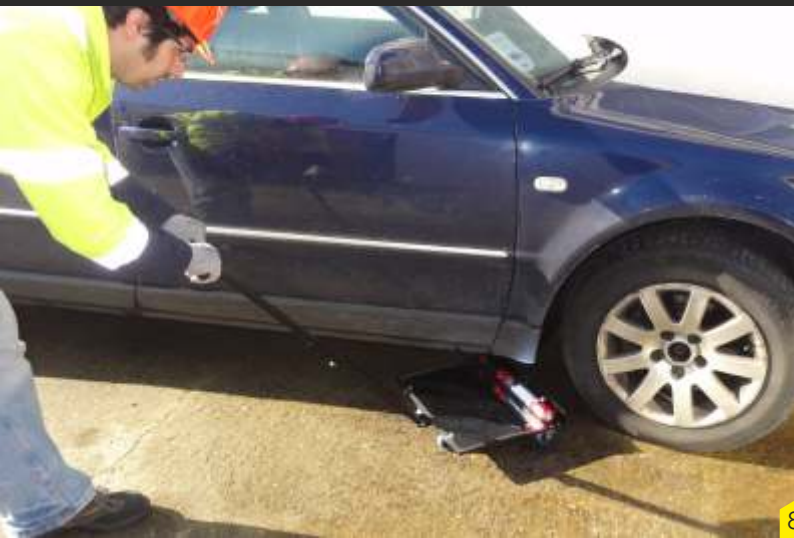


SQL-SP-MP-MP-001



SQL-SP-SM-UVSM-001

**TELESCOPIC EXTENSION MIRROR WITH WHEELS**



SQL-SP-SM-TEMW-004

# Industrial Safety Shoes



## Ecotix Low Ankle Safety Shoes



SQL-ISS-SS-ELSS-001

## ECOTIX HIGH ANKLE SAFETY SHOES



SQL-ISS-SS-EHSS-002

## GUMBOOTS



SQL-ISS-SS-G-003

## LEATHER SAFETY SHOES



SQL-ISS-SS-LSS-004

# Alcohol Detectors



**ALCOHOL DETECTOR  
RECHARGEABLE**



SQL-AD-ADR-AL1100

**ALCOHOL DETECTOR WITH  
BLUETOOTH AND MEMORY CARD**



SQL-AD-ADBMC-ALP1

**VEHICLE IGNITION  
ALCOHOL DETECTION**



SQL-AD-VIAD-ALX1000

**ALCOHOL TESTER**



SQL-AD-AT-AL6000

**ALCOHOL DETECTOR  
WITH PRINTER**



SQL-AD-ADP-AL6000P

**FUEL CELL ALCOHOL  
DETECTOR WITH PRINTER**



SQL-AD-FCADP-AL9000P

**ENTRANCE ALCOHOL DETECTOR**



SQL-AD-EAD-EBS010

**ALCOHOL BREATHALYZER**



SQL-AD-AB-AL5500

# Fall Protection



## FULL BODY SAFETY BELT



SQL-FP-SB-FBSB-001

## ROPE LADDER WITH ALUMINIUM RAGS



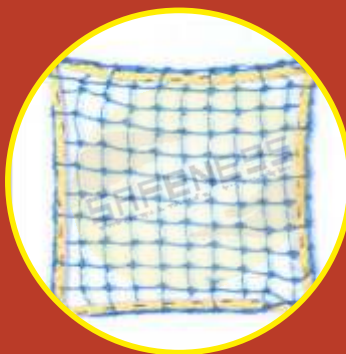
SQL-FP-L-RLAR-002

## ROOF TOP LADDER



SQL-FP-L-RTL-003

## CONSTRUCTION SAFETY NETS



SQL-FP-SN-CSN-001



# OTHER CATEGORY

**DOME MIRROR**

**FULL DOME MIRROR**

**REFLECTIVE JACKET**



SQL-TRS-DM-DM-001



SQL-TRS-DM-FDM-002



SQL-TRS-RJ-RJ-001

# SAFETY TAPES



**FLOOR MARKING TAPE**



**FLOOR MARKING TAPE**



**BARRICADING TAPE**



**ANIT SKID TAPE**

**TRAFFIC BATONS**



**SPRING POST**



**FLEXIBLE SPRING POST**



**RETRACTABLE QUEUE MANAGER - STEEL**



**RETRACTABLE QUEUE MANAGER - BRASS**



**RETRACTABLE QUEUE MANAGER - POWDER COATED**



**QUEUE POST WITH WITH VELVET ROPE**



**METAL ROAD DELINEATORS**



**WARNING LIGHT**



**SAFETY CHARTS**



**LADDERS**





**Safeness Quotient Limited**  
A/202, 2nd Floor, Hari Om Plaza,  
M. G. Road, Borivali East  
Mumbai - 400066, Maharashtra, India

Mobile:+(91)-9819880869, +(91)-9819880482  
Telephone:+(91)-(22)-28911932  
Fax: +(91)-(22)-28911364

**Website:** [www.safenessquotient.in](http://www.safenessquotient.in)

**Email:** [sales@safenessquotient.in](mailto:sales@safenessquotient.in), [sales@safeness.in](mailto:sales@safeness.in)



**You can also find us on:**

